

# High-speed and high-accurate remote welding

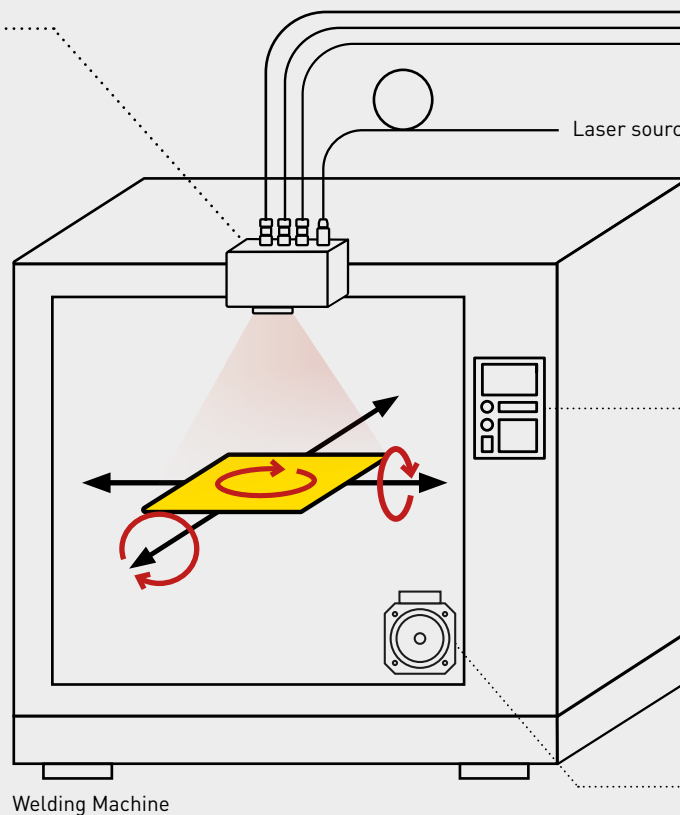
## FANUC 3D laser scanner LS3Di-A



**Galvano Scanner**  
Laser Scanner LS3Di-A



Laser Scanner Controller  
Galvano Amplifier



Welding Machine CNC

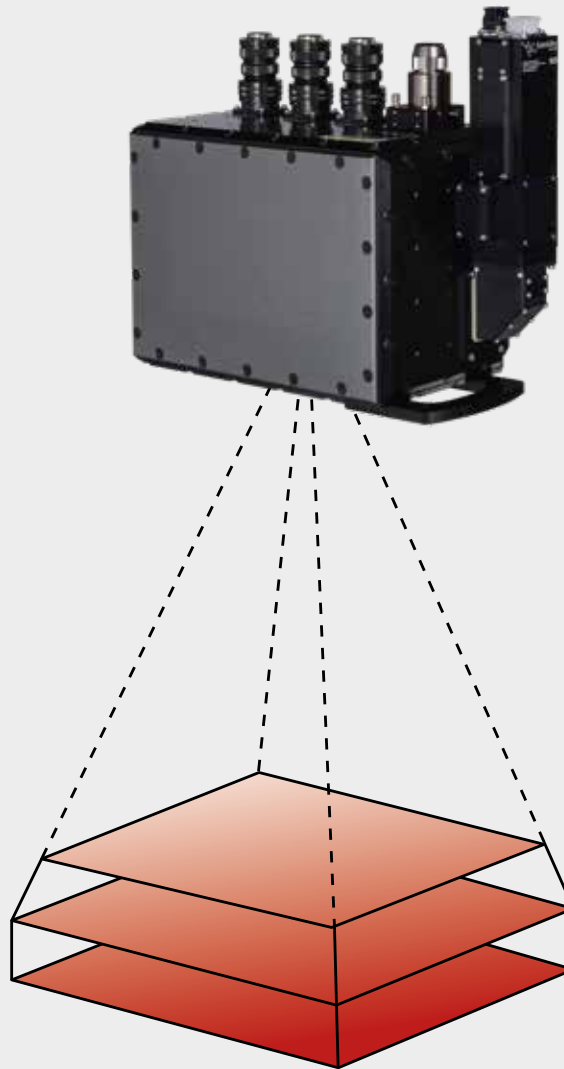


Servo Motors

### Superior scanning and welding performance with high-power lasers

- designed for excellent and easy integration with welding machines
- ideal solution to perform small workpieces welding at the highest precision level
- rapid high-speed scanning commands through G-code programs, enhancing efficiency
- compatible with a diverse range of high-power laser oscillators
- benefit from a single supplier for the whole package (laser head, CNC, motors and amplifiers) support real-time welding quality inspection.

## Easy connection with Welding Machines



### Galvano Scanner

Laser Scanner LS3Di-A

Opt. Magnification: x3.7

Working Distance: 500+/-100mm

Max. Power Input: 6000W

### Specification

Scanner type	3D laser scanner
Maximum laser input	6,000W
Laser wavelength	1,070 nm $\pm$ 10nm
Fiber type	QHB type (water-cooled)
Working space	240 mm x 240 mm (WD. = 400 mm), 300 mm x 300 mm (WD. = 500 mm to 600 mm)
Focal position (Work distance)	500 mm $\pm$ 100 mm
Optical magnification	3.7x
Mass	Main unit: 22 kg