

α -S150iB Mechanical specifications

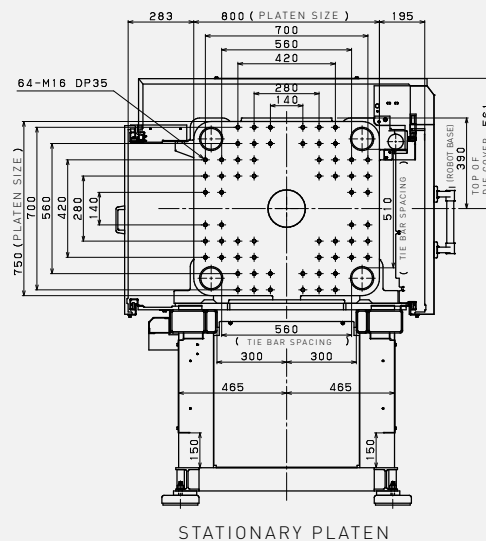
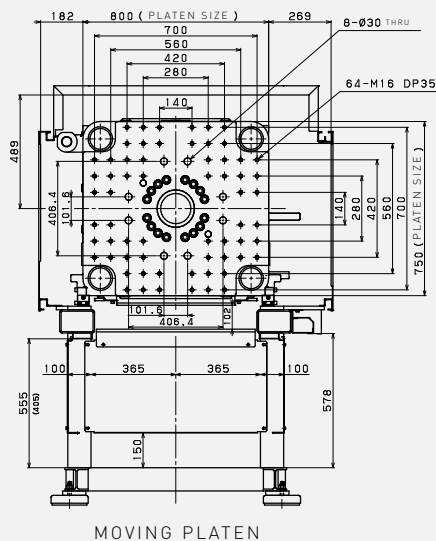
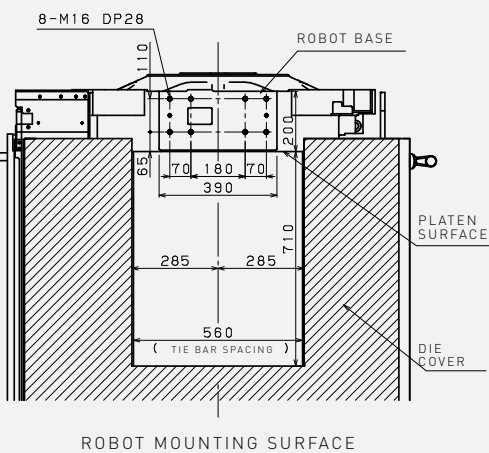
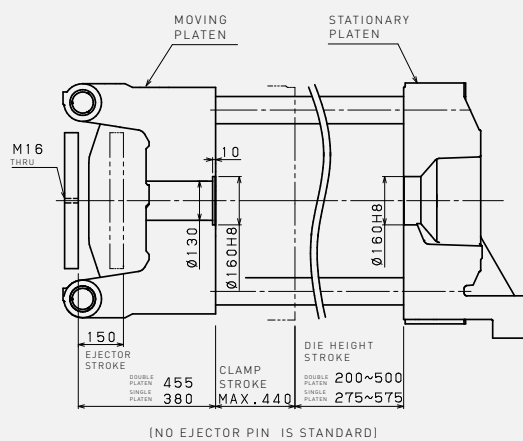
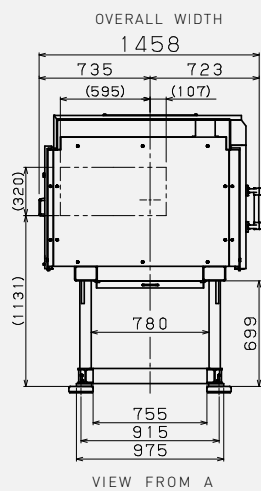
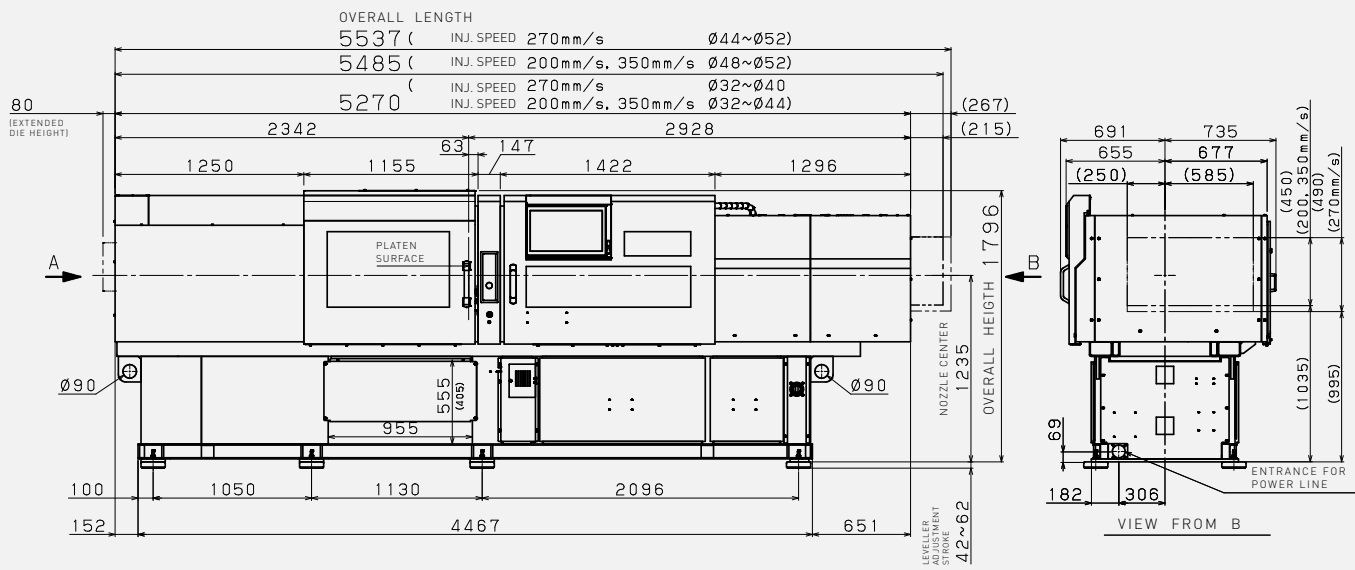


Clamping unit							
Clamping mechanism		5 Point double toggle					
Tonnage	kN tonf	1500 150 / Increased (1800 180)					
Maximum and minimum die height Double platen	mm	500-200 / Increased (600-200)					
Maximum and minimum die height Single platen	mm	575-275 / Increased (675-275)					
Clamping stroke	mm	440					
Locating ring diameter	mm	Ø 160					
Tie bar spacing, HxV	mm	560 x 510					
Platen size, HxV	mm	800 x 750					
Minimum mould size, HxV ^{*1}	mm	325 x 300					
Maximum mould weight Double platen Single platen (Moving-Stationary) ^{*2}	kg	800-800 1060-800					
Ejector stroke	mm	150					
Maximum ejector force	kN tonf	35 3.5 / Increased (80 8.0)					
Injection unit							
Screw diameter	mm	32	36	40	44	48	52 ^{*11}
Injection stroke	mm	150	150	150	176	176	208
Max. injection volume	cm ³	121	153	188	268	318	442
Nozzle touch force ^{*8}	kN tonf	30 3.0 / Increased (50 5.0)					
Max. Injection Speed mm/s ^{*4}	mm/s	200					
Max. injection & Hold Pressure 1 [MPa] ^{*3 *6}	MPa	310	310	260	220	190	160
Max. injection & Hold Pressure 2 [MPa] ^{*3 *7}	MPa	280	280	260	220	190	160
Max. injection rate [cm ³ /s] ^{*4}	cm ³ /s	160	203	251	304	361	424
Max. screw rotation speed [min ⁻¹]	min ⁻¹	300					
Machine weight Double platen Single platen [t] ^{*9}	t	7.05 ≈ 6.8					
Max. Injection Speed ^{*4}	mm/s	270 (high duty)					
Max. injection pressure (high-pressure filling mode) ^{*3 *5}	MPa	380	345	320	280	-	-
Max. injection & Hold Pressure 1 ^{*3 *6}	MPa	310	310	280	260	230	200
Max. injection & Hold Pressure 2 ^{*3 *7}	MPa	280	280	280	260	230	200
Max. injection rate ^{*4}	cm ³ /s	217	274	339	410	488	573
Max. screw rotation speed	min ⁻¹	400					
Machine weight Double platen Single platen ^{*9}	t	7.2 ≈ 6.95					
Max. Injection Speed ^{*4}	mm/s	350					
Max. injection pressure (high-pressure filling mode) ^{*3 *5}	MPa	380	345	-	-	-	-
Max. injection & Hold Pressure 1 ^{*3 *6}	MPa	310	310	280	240	190	160
Max. injection & Hold Pressure 2 ^{*3 *7}	MPa	280	280	260	220	190	160
Max. injection rate ^{*4}	cm ³ /s	281	356	439	532	633	743
Max. screw rotation speed	min ⁻¹	400					
Machine weight Double platen Single platen ^{*9}	t	7.2 ≈ 6.95					
Screw and Barrel							
Number of heater zones	Barrel	3					
Number of pyrometers	Nozzle	1					
Total heater wattage	kW	12.0	13.0	14.9	15.9	17.9	20.2

● standard - not available () with hardware and/or software option

- *1) Smaller mold than this size may limit clamp force.
- *2) If the weight of a mold exceeds maximum mold weight, the molding condition may be limited.
- *3) Maximum injection pressure and maximum hold pressure are the output of the injection unit, not the resin pressure.
 - Maximum injection pressure and maximum hold pressure are the maximum values that can be set.
- *4) Maximum injection rate and maximum injection speed is a theoretical value.
 - Maximum injection rate and maximum injection speed can not be guaranteed when the injection pressure is maximum.
- *5) The maximum injection pressure setting at high pressure filling mode option.
 - There is a limitation in injection time setting and pack time setting, when high pressure filling mode option is selected. (Contact sales for detail)
- *6) Maximum injection pressure 1 and maximum hold pressure 1 are the values when the wear-resistant and anti-corrosion cylinder etc. is installed.
 - Maximum injection pressure and maximum hold pressure may vary depends on the installed screw and cylinder specifications.
- *7) Maximum injection pressure 2 and maximum hold pressure 2 are the values when the general purpose cylinder etc. is installed.
 - Maximum injection pressure and maximum hold pressure may vary depends on the installed screw and cylinder specifications.
- *8) Sprue break cannot be used with increased nozzle touch force option.
- *9) The machine without option.
- *10) The pressure conversion is 1MPa=10kgf/cm².
- *11) The molding condition might be limited by the resin. (Contact sales for detail)
- *12) In case of the replacement to different screw diameter after shipment, some covers may be needed to replace. (Contact sales for detail)

α -S150iB Dimensions / Clamp layout



In case of the tiebarbushless clamping specification is selected, this value is applied.