

M-10iD/16S (Short arm, Hollow wrist)



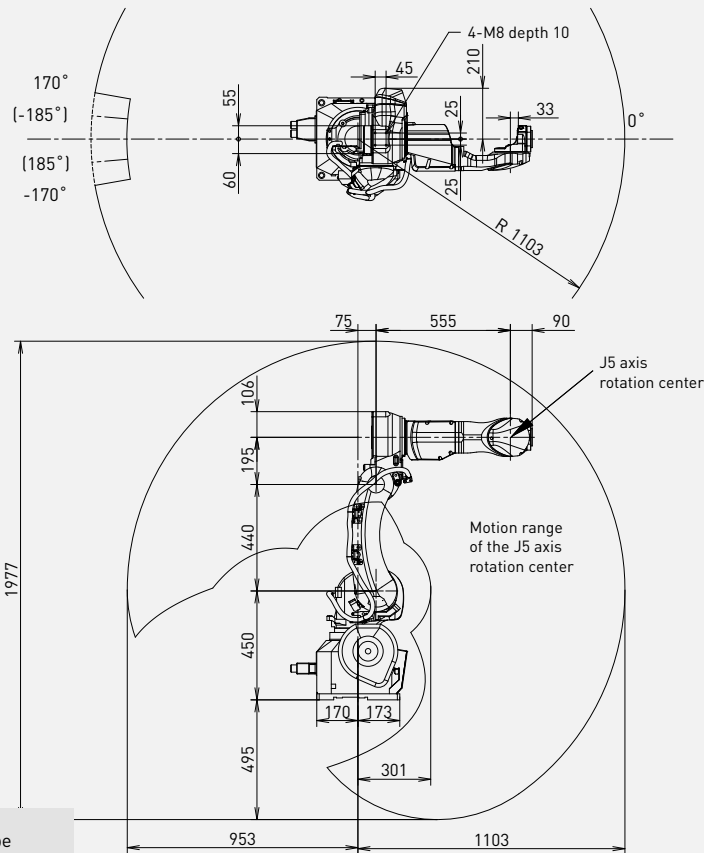
Max. load capacity
at wrist: **16 kg**



Max. reach:
1103 mm

| Controlled axes | Repeatability (mm) | Mechanical weight (kg) | Motion range (°) | | | | | | Maximum speed (°/s) | | | | | | J4 Moment/ Inertia (Nm/kgm ²) | J5 Moment/ Inertia (Nm/kgm ²) | J6 Moment/ Inertia (Nm/kgm ²) |
|-----------------|--------------------|------------------------|------------------|-----|-----|-----|---------------|---------------|---------------------|-----|-----|-----|-----|-----|---|---|---|
| | | | J1 | J2 | J3 | J4 | J5 | J6 | J1 | J2 | J3 | J4 | J5 | J6 | | | |
| 6 | ± 0.02* | 140 | 340 (370) | 235 | 340 | 380 | 280 (360)*21) | 540 (900)*21) | 290 | 270 | 270 | 430 | 450 | 730 | 26.0/0.90 | 26.0/0.90 | 11.0/0.30 |

Working range



Motion range may be restricted according to the mounting angle!

Robot

| | |
|-------------------------------|--------------------------------|
| Robot footprint [mm] | M-10iD/16S 343 x 343 |
| Mounting position Floor | ● |
| Mounting position Upside down | ● |
| Mounting position Angle | ● |

Controller

| | |
|------------------|-------------------------|
| Open air cabinet | R-30iB Plus - |
| Mate cabinet | ○ |
| A-cabinet | ● |
| B-cabinet | ○ |
| iPendant Touch | ● |

Electrical connections

| | |
|--------------------------------|---------|
| Voltage 50/60Hz 3phase [V] | 380-575 |
| Voltage 50/60Hz 1phase [V] | - |
| Average power consumption [kW] | 1 |

Integrated services

| | |
|--|-----|
| Integrated signals on upper arm In/Out | 8/8 |
| Integrated air supply | 1 |

Environment

| | |
|---------------------------|------|
| Acoustic noise level [dB] | <70 |
| Ambient temperature [° C] | 0-45 |

Protection

| | |
|----------------------------------|------------|
| Body standard/optional | IP54 /IP65 |
| Wrist & J3 arm standard/optional | IP67 |

* 21) Extended range for external cable type

● standard ○ on request - not available () with hardware and/or software option

*Based on IS09283