

α -S150iB (small capacity)

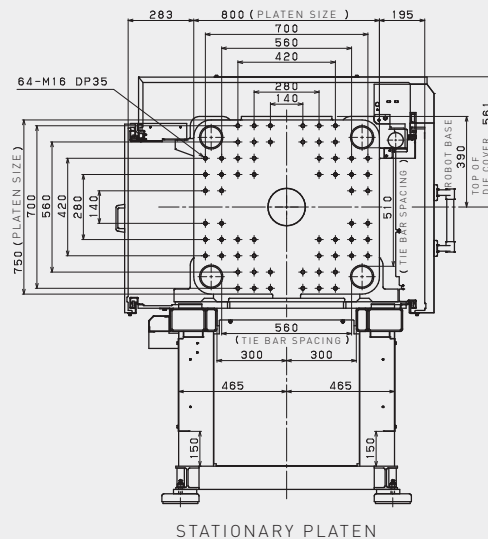
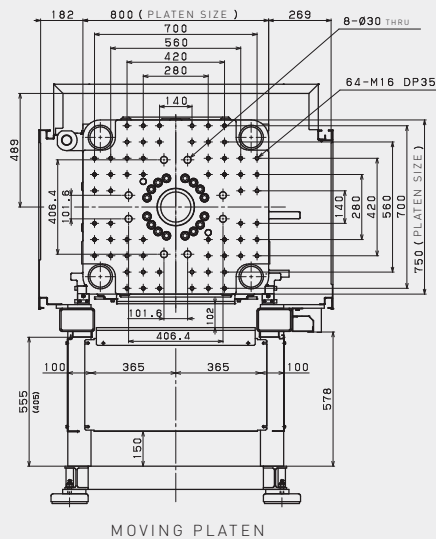
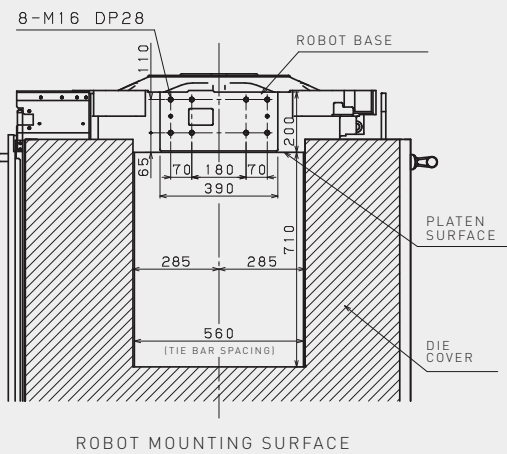
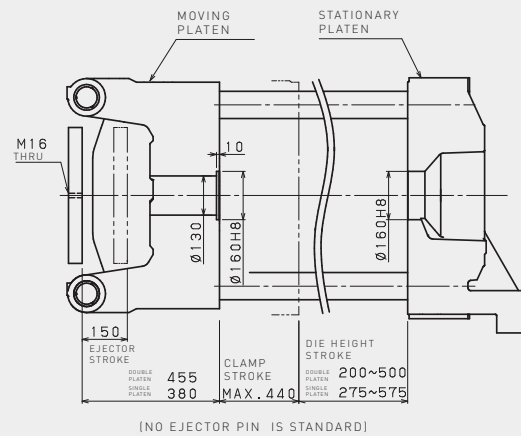
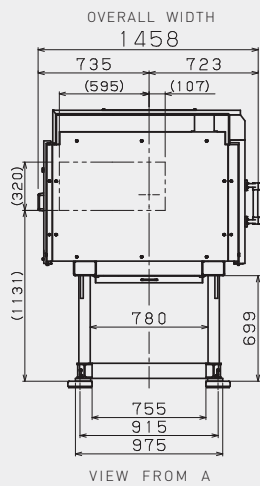
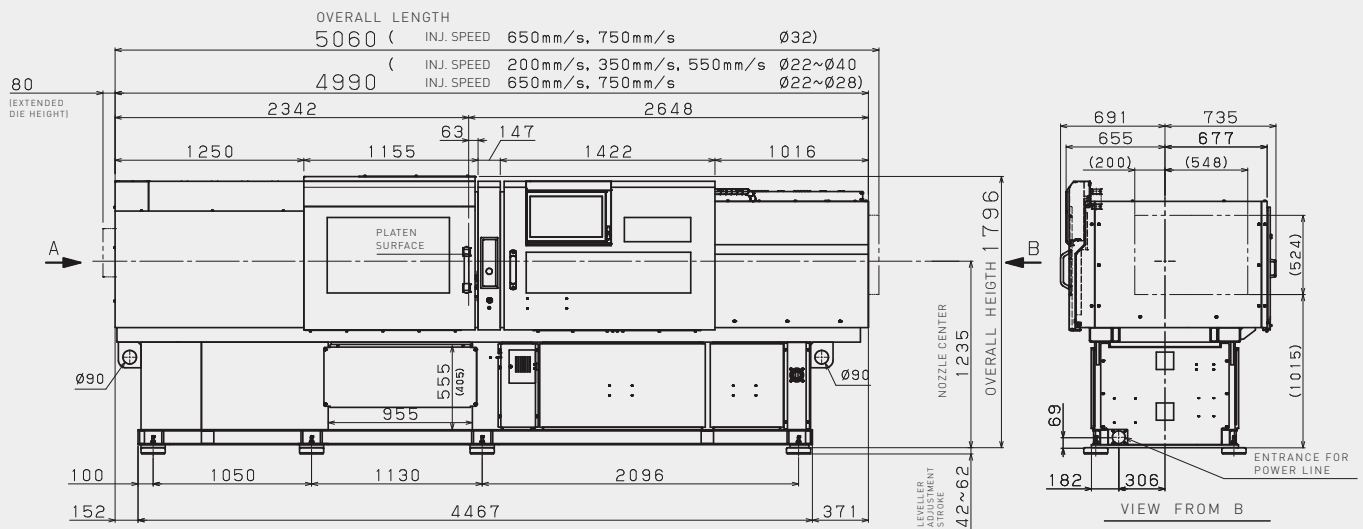
Mechanical specifications

Clamping unit									
Clamping mechanism		5 Point double toggle							
Tonnage	kN tonf	1500 150 / Increased (1800 180)							
Maximum and minimum die height Double platen	mm	500-200 / Increased (600-200)							
Maximum and minimum die height Single platen	mm	575-275 / Increased (675-275)							
Clamping stroke	mm	440							
Locating ring diameter	mm	Ø 160							
Tie bar spacing, HxV	mm	560 x 510							
Platen size, HxV	mm	800 x 750							
Minimum mould size, HxV ^{*1}	mm	325 x 300							
Maximum mould weight Double platen Single platen (Moving-Stationary) ^{*2}	kg	800-800 1060-800							
Ejector stroke	mm	150							
Maximum ejector force	kN tonf	35 3.5 / Increased (80 8.0)							
Injection unit									
Screw diameter	mm	22	26	28	32	36	40 ^{*11}	44 ^{*11}	
Injection stroke	mm	75	95	95	128	144	144(160 ^{*13})	160	
Max. injection volume	cm ³	29	50	58	103	147	181(201 ^{*13})	243	
Nozzle touch force ^{*6}	kN tonf	15 1.5 / Increased (30 3.0)							
Max. Injection Speed^{*4}	mm/s	200 (high duty)							
Max. injection pressure (high-pressure filling mode) ^{*3*5}	MPa	-	-	-	270	220	-	-	
Max. injection & Hold Pressure 1 ^{*3*6}	MPa	-	-	-	250	200	180	-	
Max. injection & Hold Pressure 2 ^{*3*7}	MPa	-	-	-	220	200	180	-	
Max. injection rate ^{*4}	cm ³ /s	-	-	-	160	203	251	-	
Max. screw rotation speed	min ⁻¹	-	-	-	450				
Machine weight Double platen Single platen ^{*9}	t	6.4 ≈ 6.15							
Max. Injection Speed^{*4}	mm/s	350							
Max. injection pressure (high-pressure filling mode) ^{*3*5}	MPa	340	340	320	270	220	-	-	
Max. injection & Hold Pressure 1 ^{*3*6}	MPa	290	290	270	250	190	160	-	
Max. injection & Hold Pressure 2 ^{*3*7}	MPa	260	260	240	220	190	160	-	
Max. injection rate ^{*4}	cm ³ /s	133	185	215	281	356	439	-	
Max. screw rotation speed	min ⁻¹	450							
Machine weight Double platen Single platen ^{*9}	t	6.4 ≈ 6.15							
Max. Injection Speed^{*4}	mm/s	350 (high pressure)							
Max. injection & Hold Pressure 1 ^{*3*6}	MPa	-	-	-	290	260	210	170	
Max. injection & Hold Pressure 2 ^{*3*7}	MPa	-	-	-	230	220	210	170	
Max. injection rate ^{*4}	cm ³ /s	-	-	-	281	356	439	532	
Max. screw rotation speed	min ⁻¹	450						400	
Machine weight Double platen Single platen ^{*9}	t	6.5 ≈ 6.25							
Max. Injection Speed^{*4}	mm/s	550							
Max. injection pressure (high-pressure filling mode) ^{*3*5}	MPa	340	-	-	-	-	-	-	
Max. injection & Hold Pressure 1 ^{*3*6}	MPa	290	260	220	170	-	-	-	
Max. injection & Hold Pressure 2 ^{*3*7}	MPa	260	260	220	170	-	-	-	
Max. injection rate ^{*4}	cm ³ /s	209	292	338	442	-	-	-	
Max. screw rotation speed	min ⁻¹	450							
Machine weight Double platen Single platen ^{*9}	t	6.4 ≈ 6.15							
Screw and Barrel									
Number of heater zones	Barrel	3							
Number of pyrometers	Nozzle	1							
Total heater wattage	kW	3.9	6.5	7.2	8.4	9.1	9.9(10.6 ^{*13})	11.3	

● standard - not available () with hardware and/or software option

- *1) Smaller mold than this size may limit clamp force.
- *2) If the weight of a mold exceeds maximum mold weight, the molding condition may be limited.
- *3) Maximum injection pressure and maximum hold pressure are the output of the injection unit, not the resin pressure.
- Maximum injection pressure and maximum hold pressure are the maximum values that can be set.
- *4) Maximum injection rate and maximum injection speed is a theoretical value.
- Maximum injection rate and maximum injection speed can not be guaranteed when the injection pressure is maximum.
- *5) The maximum injection pressure setting at high pressure filling mode option.
- There is a limitation in injection time setting and pack time setting, when high pressure filling mode option is selected. [Contact sales for detail]
- *6) Maximum injection pressure 1 and maximum hold pressure 1 are the values when the wear-resistant and anti-corrosion cylinder etc. is installed.
- Maximum injection pressure and maximum hold pressure may vary depends on the installed screw and cylinder specifications.
- *7) Maximum injection pressure 2 and maximum hold pressure 2 are the values when the general purpose cylinder etc. is installed.
- Maximum injection pressure and maximum hold pressure may vary depends on the installed screw and cylinder specifications.
- *8) Sprue break cannot be used with increased nozzle touch force option.
- *9) The machine without option.
- *10) The pressure conversion is 1MPa=10kgf/cm².
- *11) The molding condition might be limited by the resin. [Contact sales for detail]
- *12) In case of the replacement to different screw diameter after shipment, some covers may be needed to replace. [Contact sales for detail]
- *13) When the injection speed 350mm/s (high pressure) specification with screw diameter of φ40 is selected, the screw stroke is 160mm and the maximum injection volume is 201cm³, the total heater wattage is 10.6 kW.

α -S150iB (small capacity) Dimensions / Clamp layout



In case of the tiebarbushless clamping specification is selected, this value is applied.